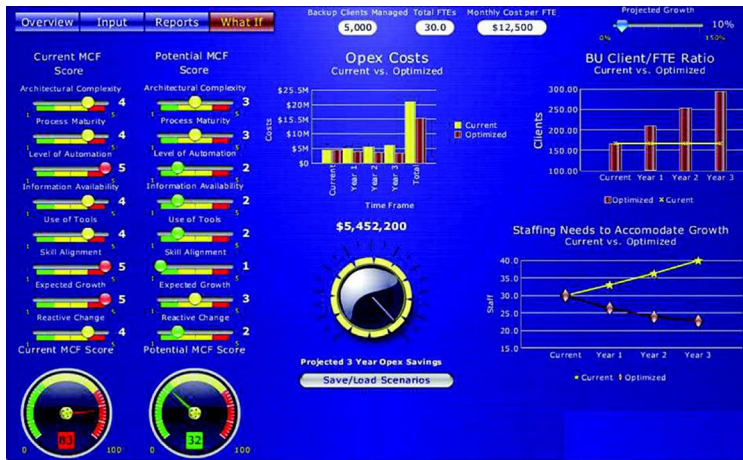




# IBM Storage Optimization and Integration Services for transformation strategy



Transformation strategy, powered by MCF interactive data modeling tool, or “what if” calculator, helps determine the value of potential operational improvement activities.

## Highlights

- **Helps address the ongoing management of heterogeneous storage environments**
- **Rates the overall efficiency of the storage and IT environment**
- **Develops a roadmap to remediation of inefficiencies**

## Discovering the inefficiencies that increase costs

Many IT managers struggle with the complexity of their heterogeneous, interconnected IT environment and its effects on service levels and operational costs. The challenges are even greater for IT managers who are integrating disparate environments as a result of merger and acquisition activity or for organizations facing exponential growth with fixed budgets.

For these organizations and IT groups working to better align IT and business, a transformation strategy, powered by a Management Complexity Factor (MCF) solution can help rapidly discover the roots of complexity and cost, identifying opportunities for operational improvements across complex IT environments — geared toward providing service levels with available staff, at reduced costs.

A transformation strategy, powered by MCF solution quickly and efficiently analyzes your interconnected IT and storage environments, determining cost inefficiencies, dependencies and opportunities for improvement — both short term and long range. More than an assessment of the current state, the solution looks at where your IT needs to go and provides tactical, short-term activities that can lead to strategic, long-range improvement.



© Copyright IBM Corporation 2008

## **Rapidly determining where to align business and IT**

Developed through years of field experience, a transformation strategy, powered by MCF is a framework and methodology designed to enable rapid evaluation of eight essential metrics that can be used to measure almost any IT environment. The solution helps reveal the operational costs and staffing issues associated with each storage component that makes up a business's IT infrastructure — storage, backup and disaster recovery/business continuity. IBM weights the metrics by their importance to the business and assigns each metric a score that results in a "management complexity factor" for the IT environment.

Then using proprietary methodology and tools, IBM ties the assigned MCF score to operational costs, providing IT management with an overall complexity score and ROI goal — prioritizing the steps necessary to help reduce that score and improve ROI over a specified period of time.

## **Building a roadmap for improvement**

IBM storage and infrastructure professionals can rapidly perform an initial assessment of your environment, uncovering inefficiencies that can create barriers to service delivery, result in uncontrollable growth in operating expenses and threaten ROI. You receive a roadmap designed to help you focus on changes that reflect where the IT organization needs to go, prioritized by activities that may offer the biggest return on investment and business benefit.

Combined with IBM's storage product leadership and deep expertise in designing, implementing and managing storage environments for organizations of virtually all sizes, a transformation strategy, powered by MCF solution from IBM offers you confidence that your storage and IT environments can be managed more efficiently and cost-effectively.

## **For more information**

To learn more about IBM Storage Optimization and Integration Services for transformation strategy, contact your IBM representative or visit:

**ibm.com**/services/storage

IBM Global Services  
Route 100  
Somers, NY 10589  
U.S.A.

Produced in the United States of America  
03-08  
All Rights Reserved

IBM and the IBM logo are trademarks or registered trademarks of International Business Machines Corporation in the United States, other countries, or both.

Other company, product and service names may be trademarks or service marks of others.

References in this publication to IBM products or services do not imply that IBM intends to make them available in all countries in which IBM operates.